

COMPRESSOR

Displacement (cm ³)	34.42
Diameter (mm)	42.87
Stroke (mm)	23.85
Net Weight (Kg)	22.7
Oil type	ISO VG 46 ESTER
Oil charge (cm ³)	887

MOTOR

Approximate Power (CV)	1
Voltage/Frequency (V/Hz)	220V 50Hz
Voltage range (V)	187-264
Code	82,169
Type	CSR
Phase number	1 PH
Locked rotor current (A)	39.0
Main W. resist. at 25°C (Ω)	1.53
Start W. resist. at 25°C (Ω)	4.79

APPLICATION

Application	Low back pressure
Refrigerant	R404A
Evaporating (°C)	-40 to -10
Expansion	Capillar/Valve
Comp. cooling	Fan cooled
Max. ambient temp. (°C)	43

NOMINAL PERFORMANCE

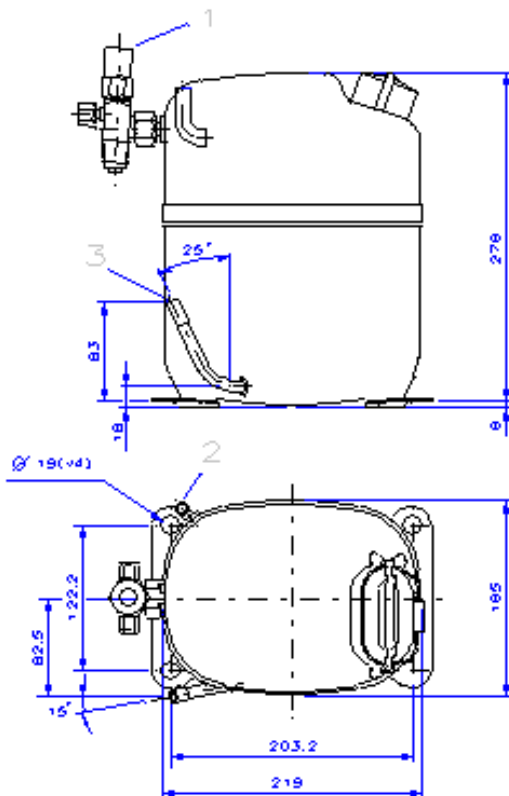
	CYCLE A	CYCLE B
Cooling capacity (W)	1089	1628
Input power (W)	1140	1205
EER (kcal/Wh)	0.82	1.16
COP (W/W)	0.95	1.35
Current (A)	6.12	6.39

TEST CONDITIONS

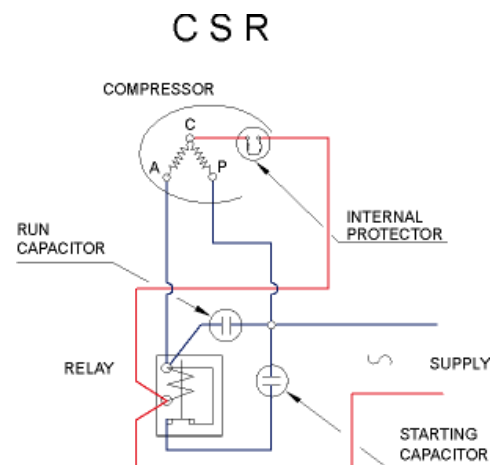
	CYCLE A	CYCLE B
Evaporating temp. (°C)	-25.0	-23.3
Condensing temp. (°C)	55.0	55.0
Liq.t. entering expan. (°C)	55.0	32.0
Ambient t. and return (°C)	32.0	32.0
Tens/Freq (V/Hz)	220V 50Hz	220V 50Hz

ELECTRICAL COMPONENTS

Relay	3ARR3 10AA3	RVA 4M..
Pick-Up (A)	239-270	242-270
Drop-Out (A)	50-110	50-110
Protector	Internal	
Current (A)		
Time check (seg)		
Disc temp. (Open/Close) (°C)		
Starting capacitor (μF/V)/F/V)	88-108 / 330	
Run capacitor (μF/V)	20 / 400	

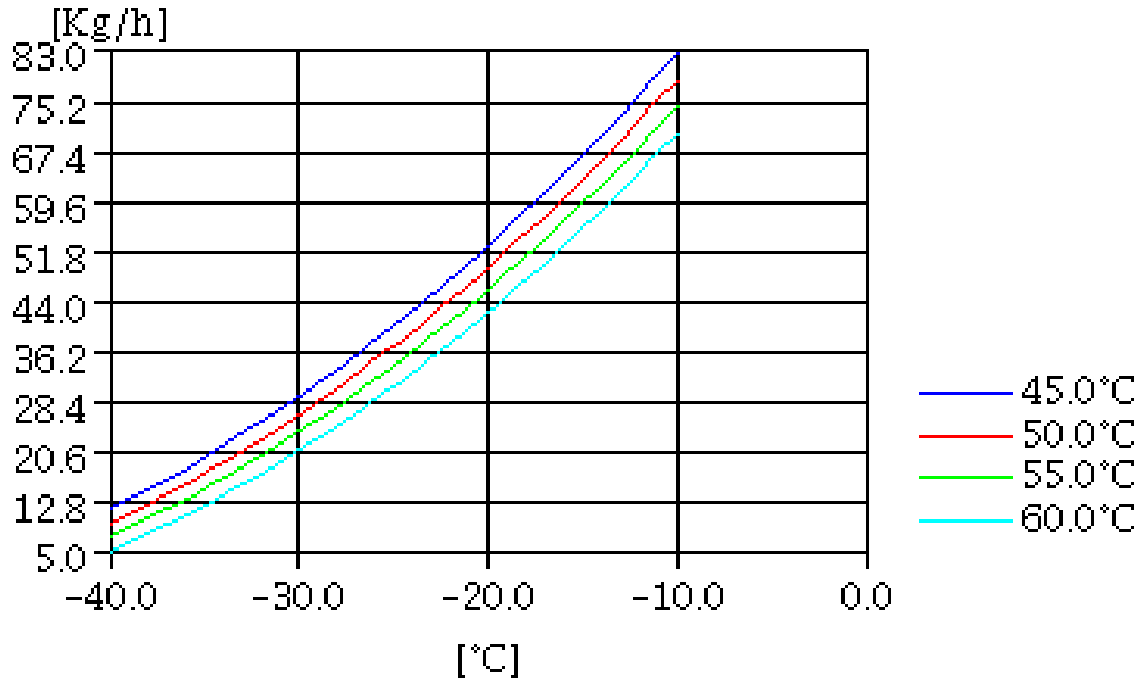
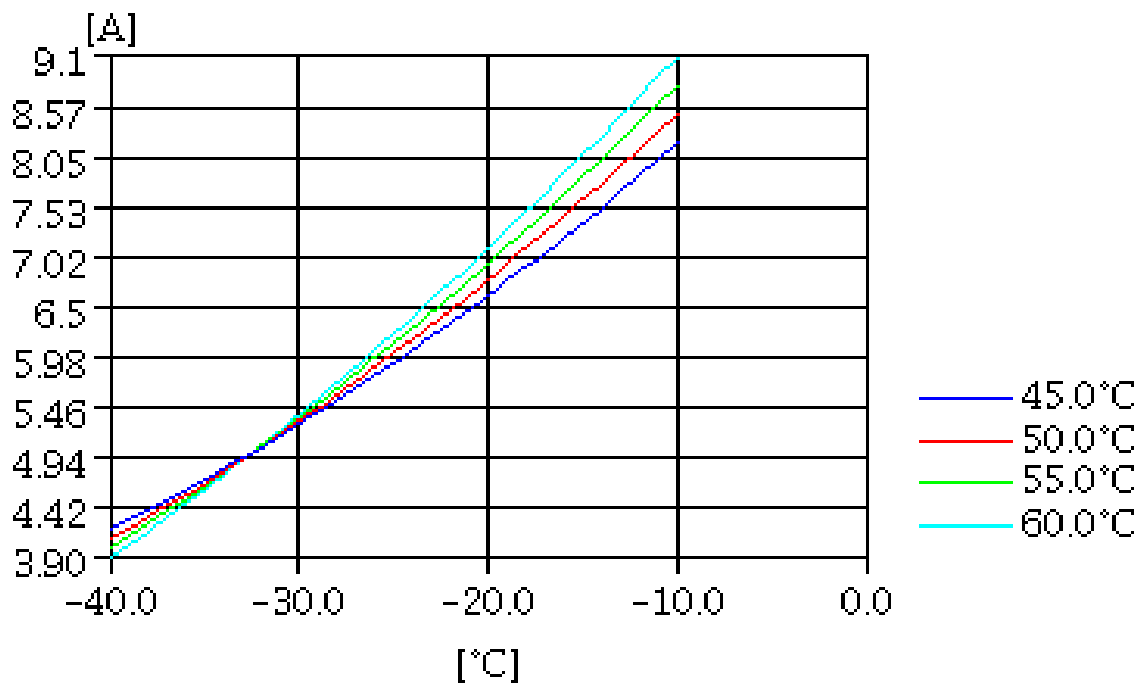
DIMENSIONS AND ELECTRICAL DIAGRAM


DESIGNATION	INTERNAL DIAM. (MM)
1 Válv. Serv.	5/8" SAE
2 Service	9.6
3 Discharge	8.0



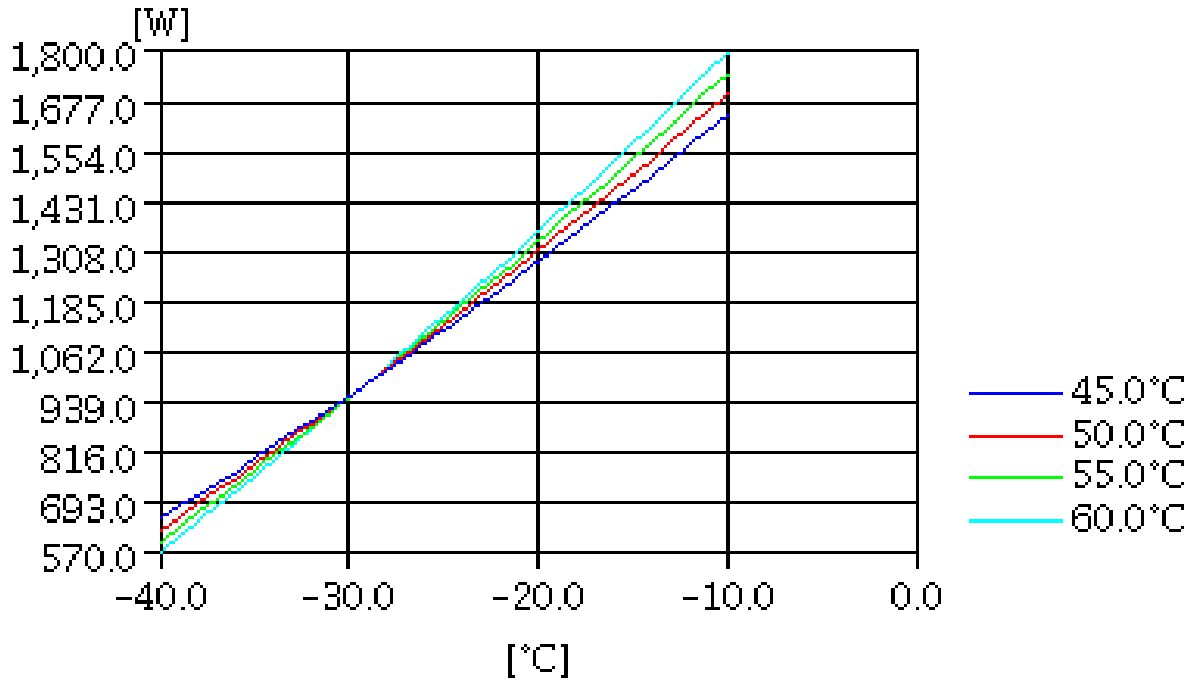
TEST CONDITIONS

Voltage/frequency	220V 50Hz
Ambient t. and return	32 °C
Liq.t. entering expan.	Subcooling at 32 °C

MASS FLOW

CONSUMPTION


TEST CONDITIONS

Voltage/frequency	220V 50Hz
Ambient t. and return	32 °C
Liq.t. entering expan.	Subcooling at 32 °C

INPUT W

COOLING CAPACITY
